

## San Diego Zoo and the US Navy

*Susan Farabaugh*

*San Clemente Loggerhead Shrike Captive Breeding*

*Applied Animal Ecology*

*San Diego Zoo's Institute for Conservation Research*



# San Clemente Loggerhead Shrike Recovery Project Collaborators

U.S. Navy,

U.S. Fish and Wildlife Service,

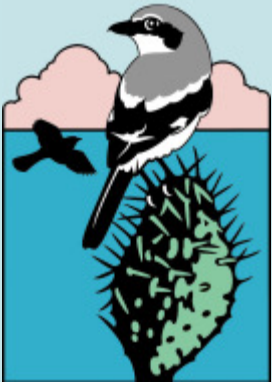
Institute For Wildlife Studies,

San Diego State Univ. Soil Ecology & Restoration Group, and

The San Diego Zoo's Institute for Conservation Research

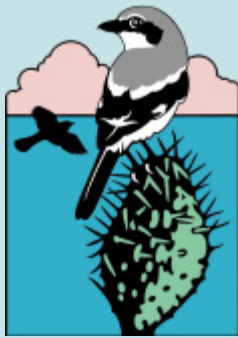
\*PRBO Conservation Science (1998-2005)

\*Endangered Species Recovery Council (~1991-1998)

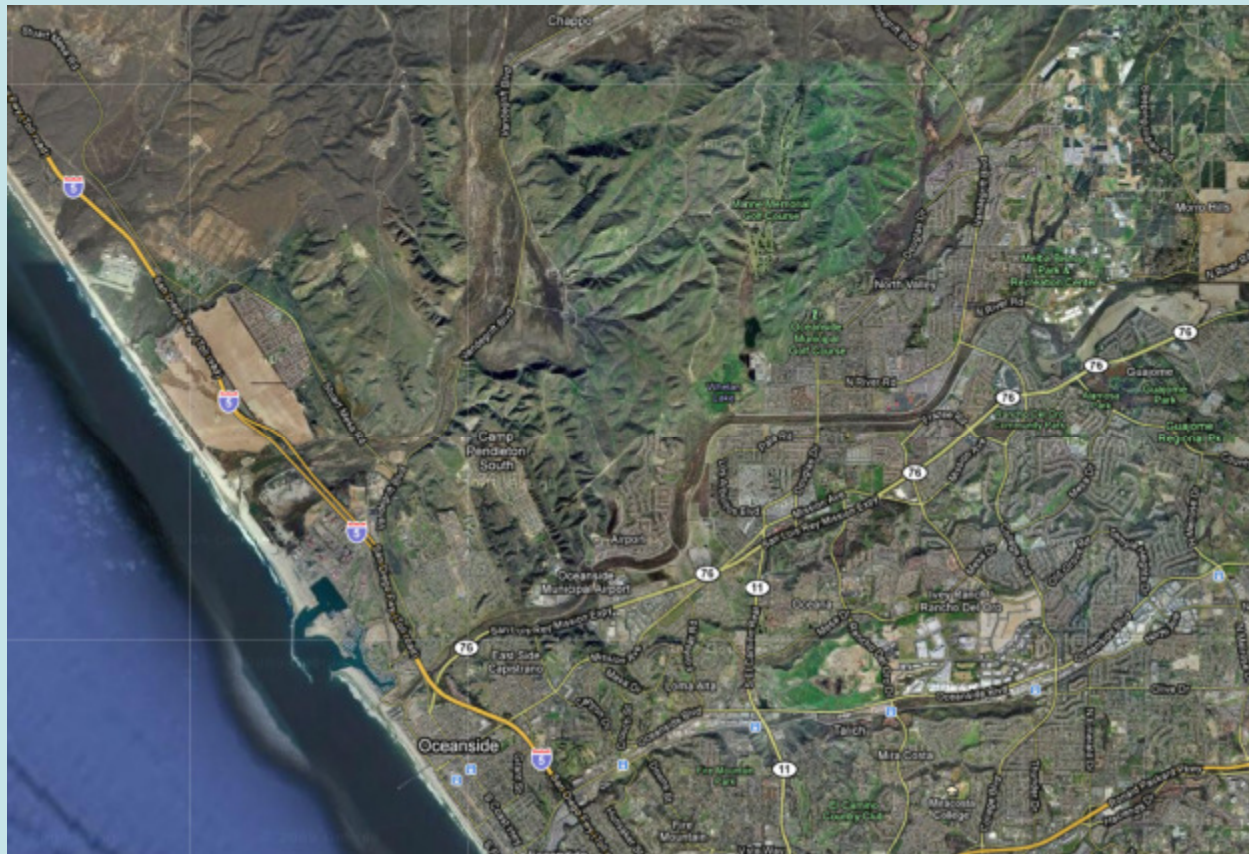


### San Clemente Island:

The southernmost of the eight Channel Islands, about 75 miles west of San Diego, it is ~21 miles long. Owned by the US Navy since 1934, it and its surrounding waters provide research and operational training for the Pacific Fleet.

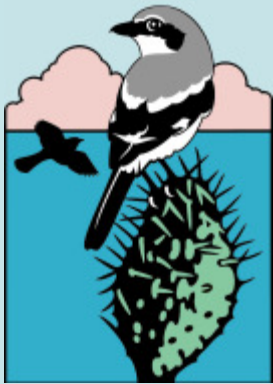


## Why get involved with the US Navy?



Lots of endangered species issues, and funding opportunities

# Or you can work on an interesting island San Clemente Island



Flat mesas  
In the middle



Steep on the  
east side



Terraces on the  
west side  
Cut by deep  
canyons



Or with an interesting bird



MMmmmm  
Mouse brain w/ an ear on the  
side

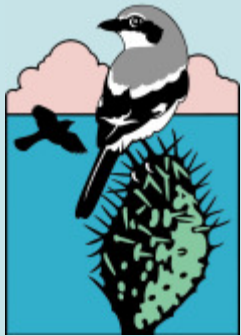


## Designing a project together

This may be difficult

The military is involved in applied conservation activities and one needs to find projects that fit their needs

Potential conflicts between Military needs and Academic needs, and between Military biologists and a student's committee

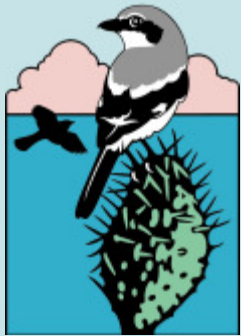


## Getting involved with NAIs logistics is A Happy Collaboration possible

Former crew members experienced with the Navy and the ongoing projects have been the most successful

Former crew members can see whether there is a study question that they could take on that can fit into the ongoing projects

Former crew members have a better understanding of the context in which they will be working



## Results and Future

Applied Conservation projects, helping the Navy meet their environmental goals

Projects can be very long term, for example the shrike recovery has been ongoing since 1991

